



# **LASOP Slide Seminar Case Presentation**

**November 10, 2009**

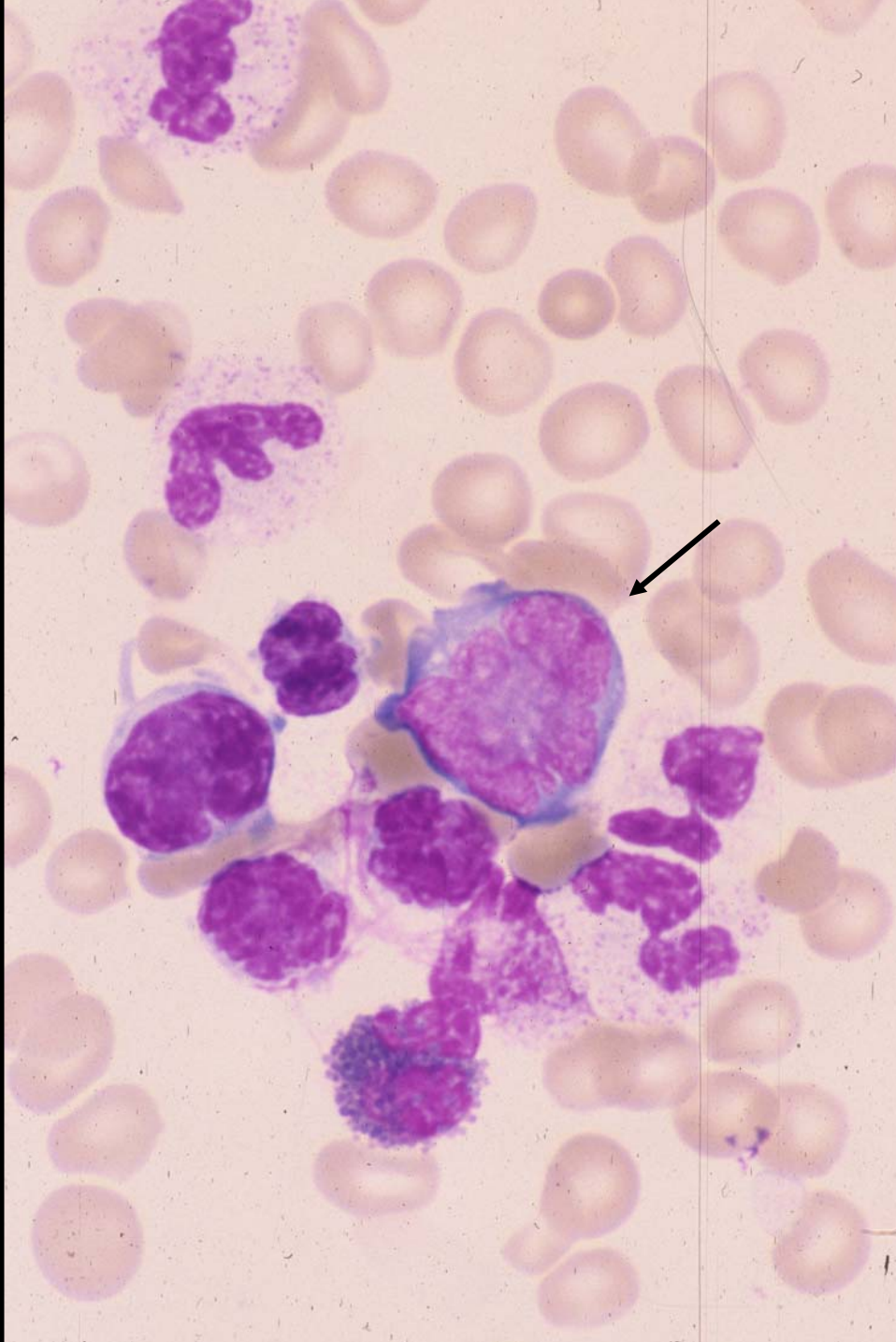
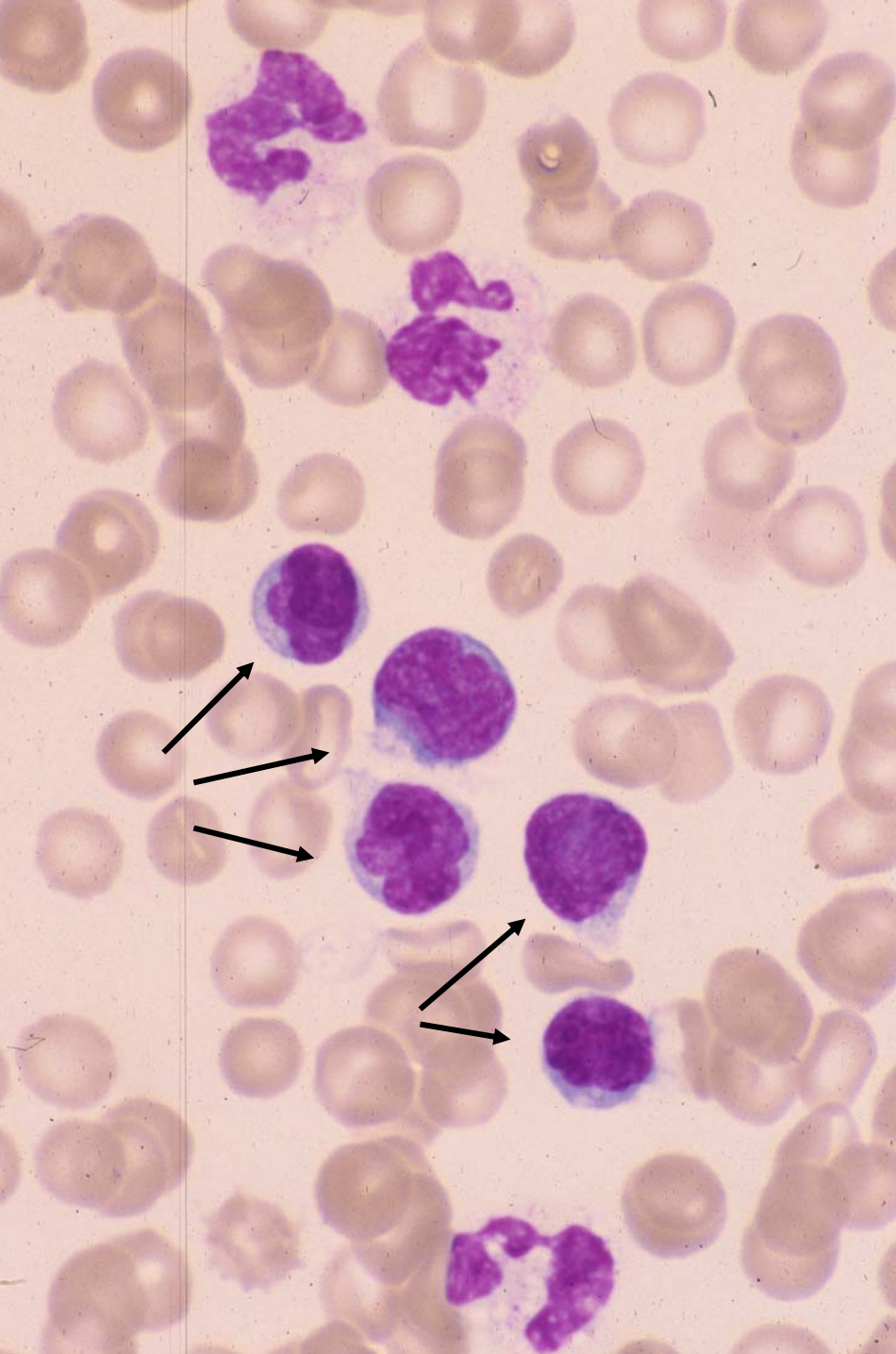
**Sara Acree, M.D. (PGY-3)  
LAC+USC Medical Center**

# History

- **Pt:** 13 year-old Hispanic male
- **CC:** Fever, chills, night sweats, cough, and hemoptysis x 1 week
- **PMH:** None
- **PE:** Raised petechial lesions on chest  
Generalized lymphadenopathy
- **CXR:** Diffuse bilateral pulmonary infiltrates

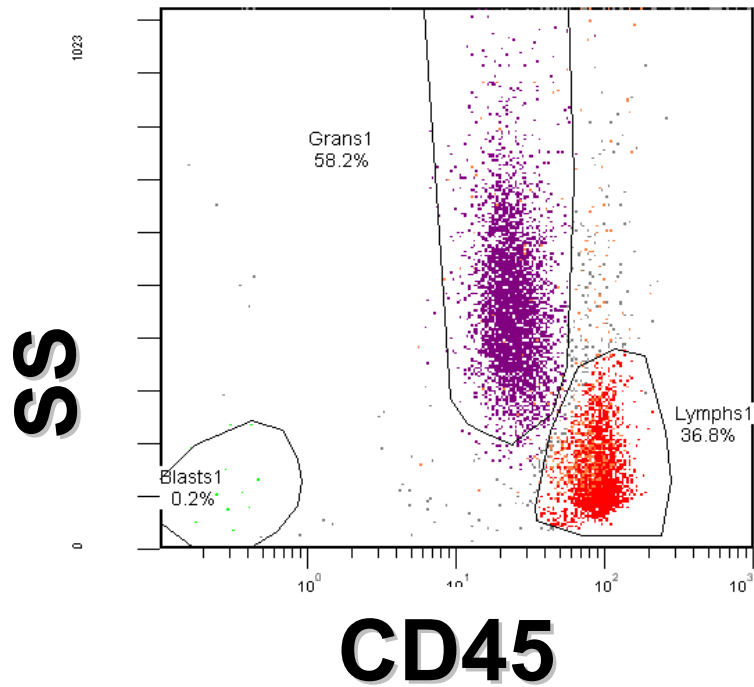
# Lab Studies

- **CBC**
  - Hb 11.7 g/dL
  - Plts  $91 \times 10^3 \mu\text{L}$
  - WBC  $40.7 \times 10^3 \mu\text{L}$ 
    - NEUT 69, LYMPH 17, MONO 13, EOS 1
- **Blood & Sputum Cultures:**
  - Negative for aerobic, anaerobic, and acid fast bacteria
  - Negative for viral agents
- **Viral serologies negative:**
  - CMV, EBV, HSV, HBsAg, HBcAb, HCV, HAV, HIV

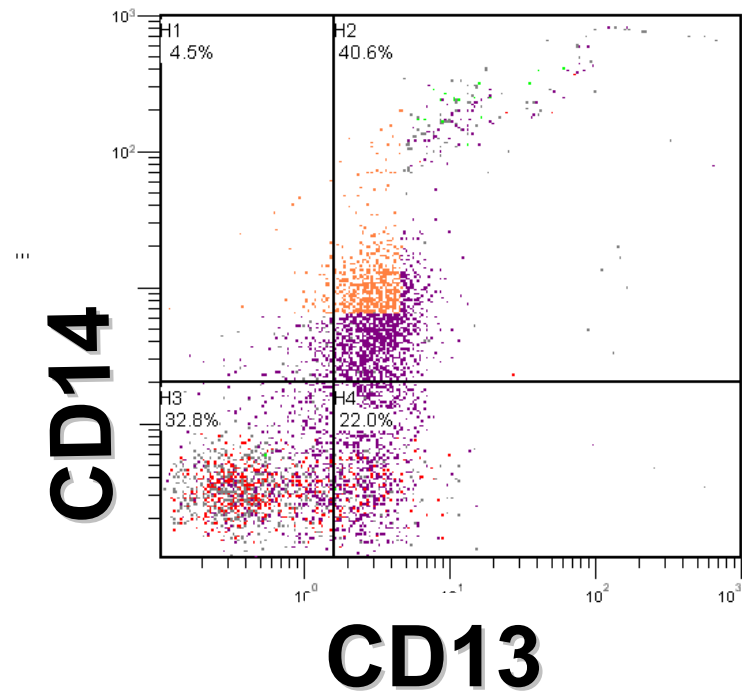


# Flow Cytometry - PB

(F2)[Ungated] X0069651.LMD : FL4 LOG/SS

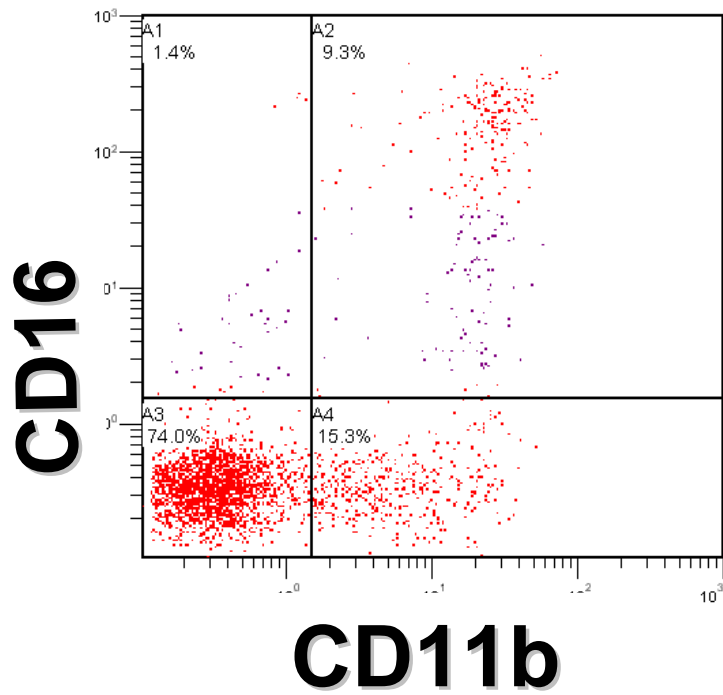


(F7)[Ungated] X0069671.LMD : FL1 LOG/FL2 LOG

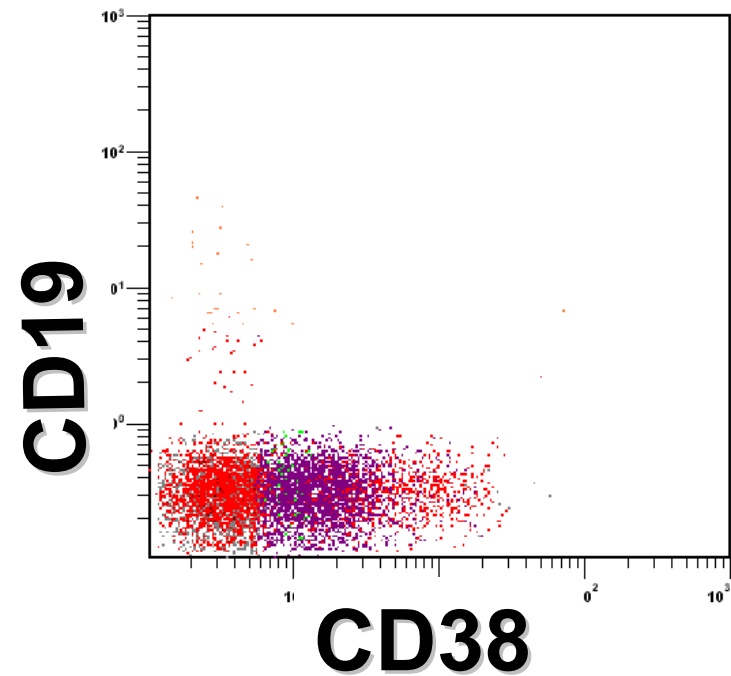


# Flow Cytometry - PB

(F2)[Lymphs1] X0069657.LMD : FL1 LOG/FL2 LOG

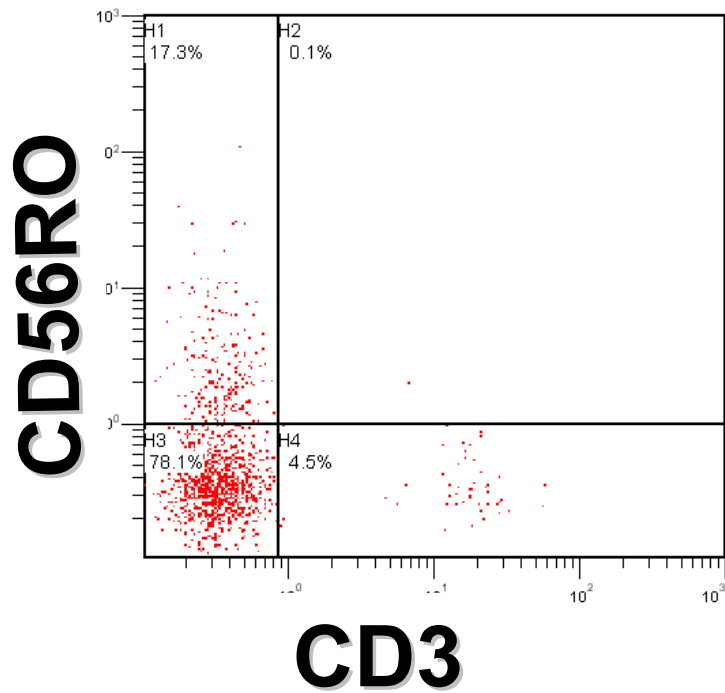


(F4)[Ungated] X0069603.LMD : FL4 LOG/FL2 LOG

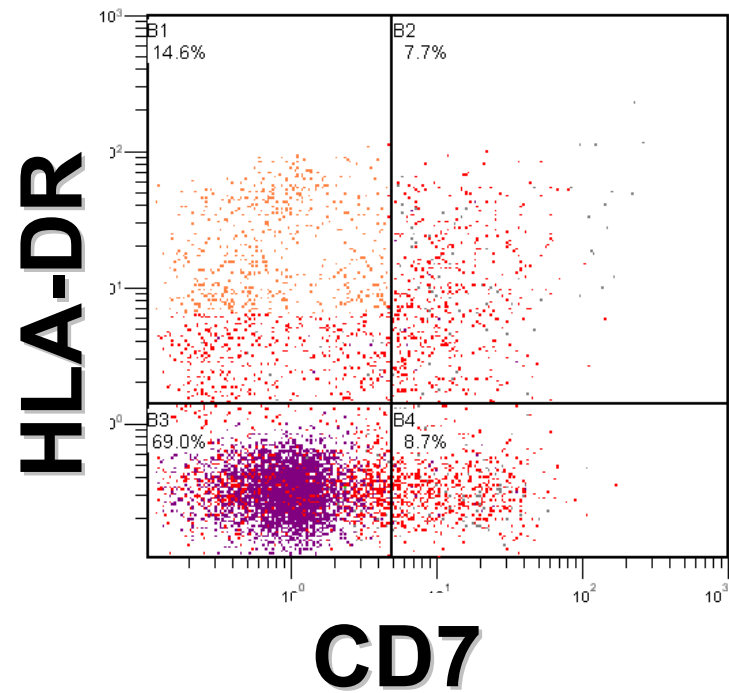


# Flow Cytometry - PB

(F2)[F] X0069639.LMD : FL3 LOG/FL2 LOG



(F4)[Ungated] X0069653.LMD : FL1 LOG/FL2 LOG



# Flow Cytometry (PB) - Results

## Positive:

- CD45
- Subpopulation: CD7, CD11b, CD13, CD16, CD38, CD56, CD71, HLA-DR

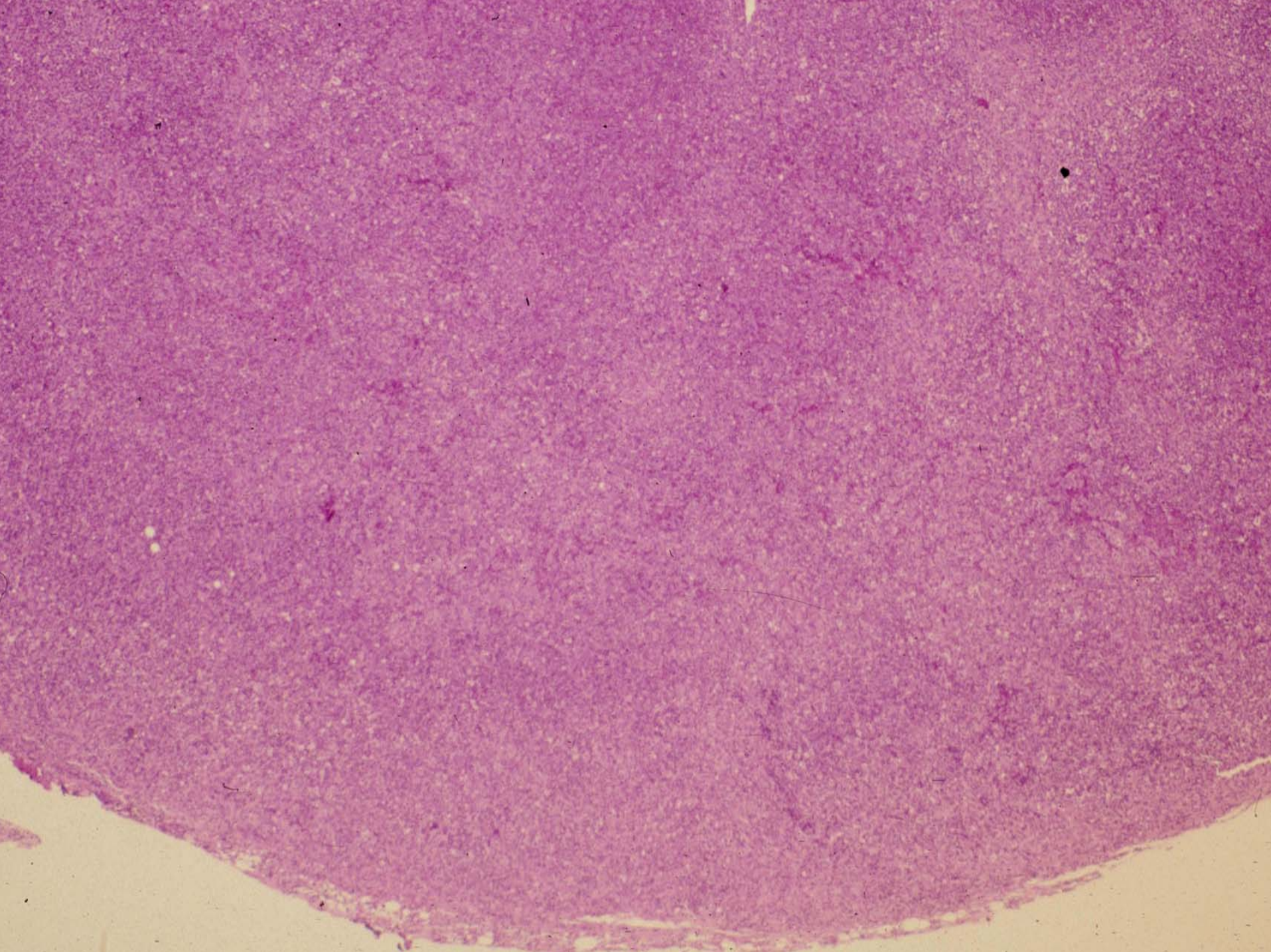
## Negative:

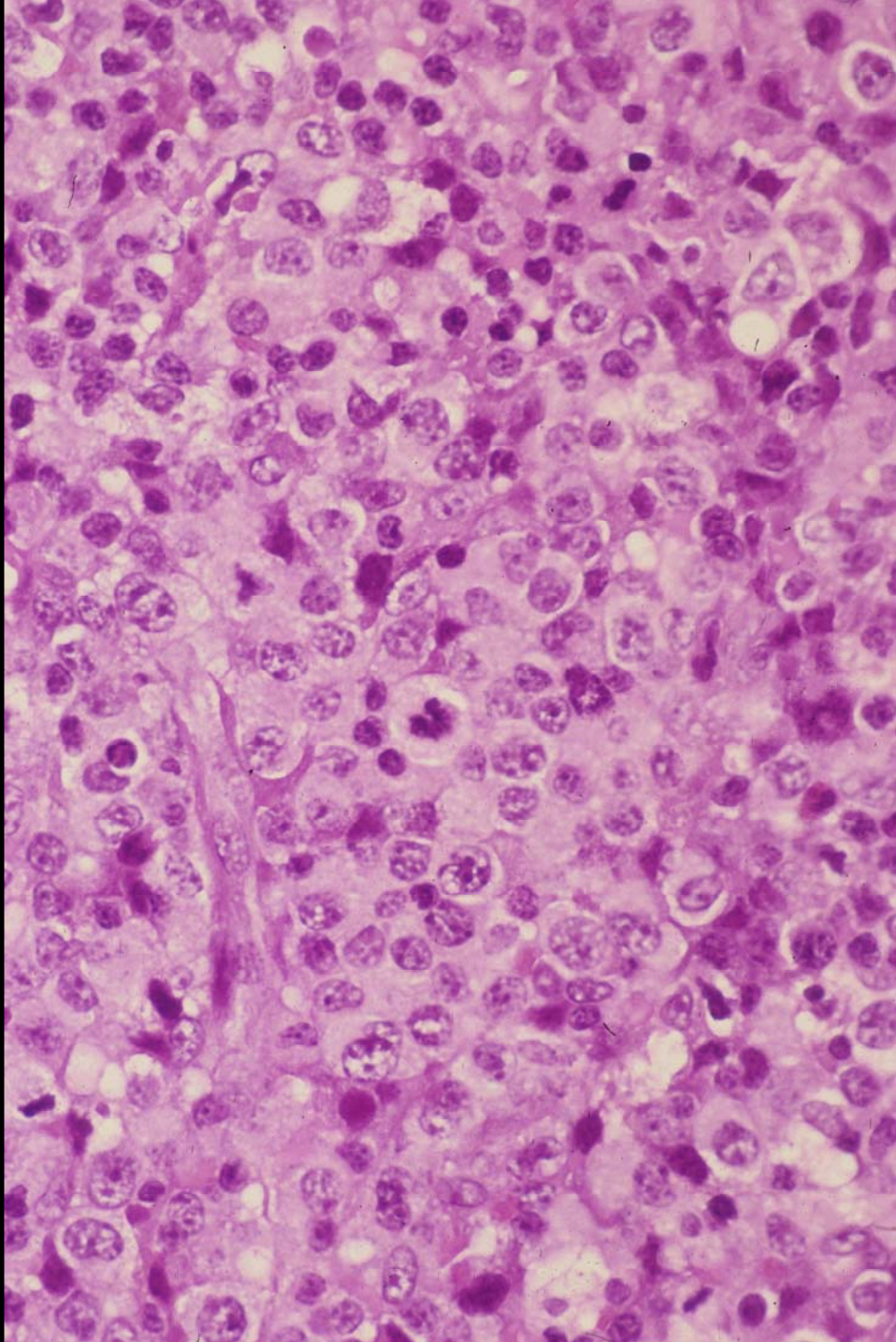
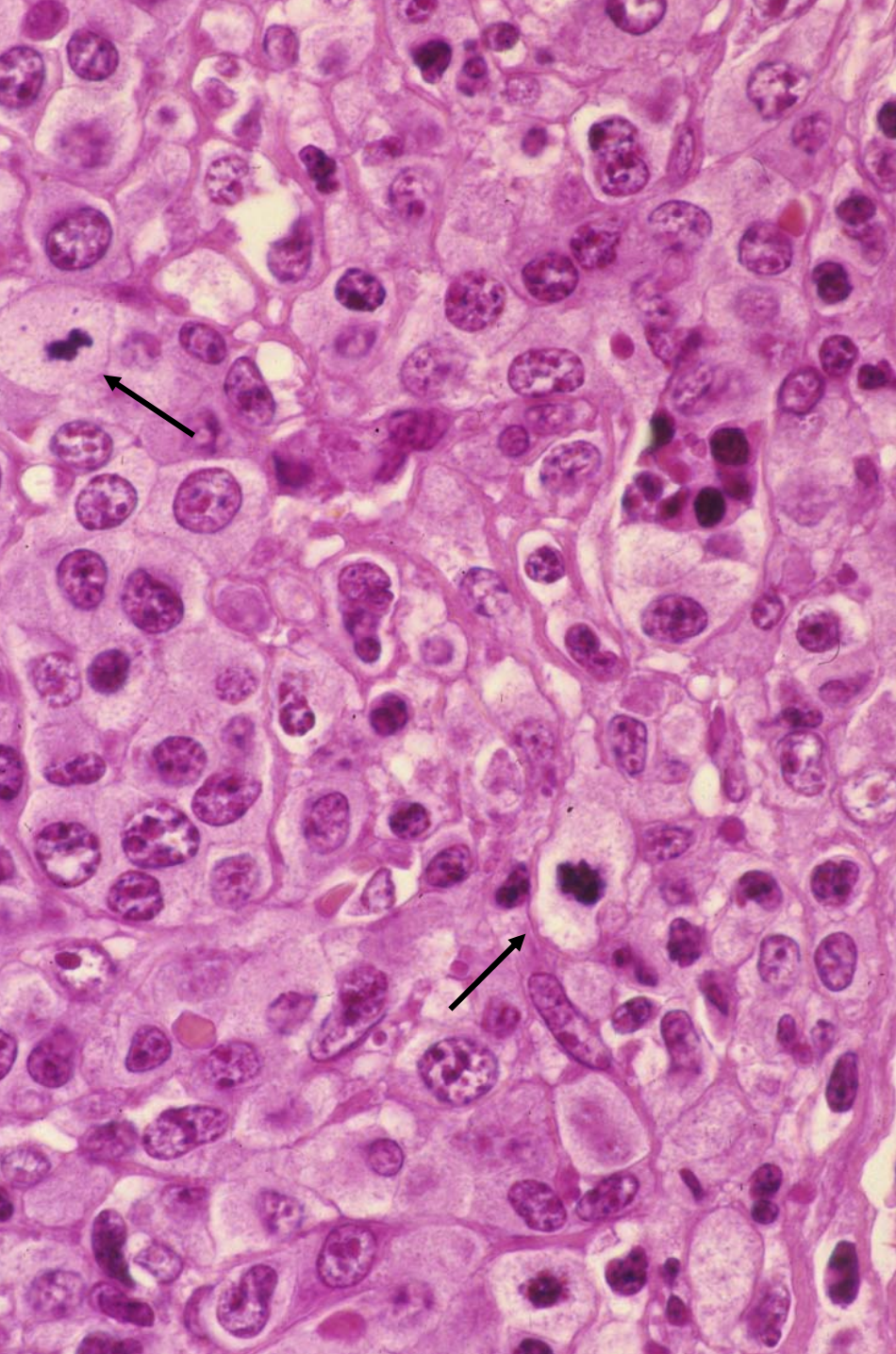
- CD2, CD3, cytoplasmic CD3, CD4, CD5, CD7, CD8, CD10, CD14, CD19, CD20, CD23, CD33, CD34, FMC7, kappa, lambda

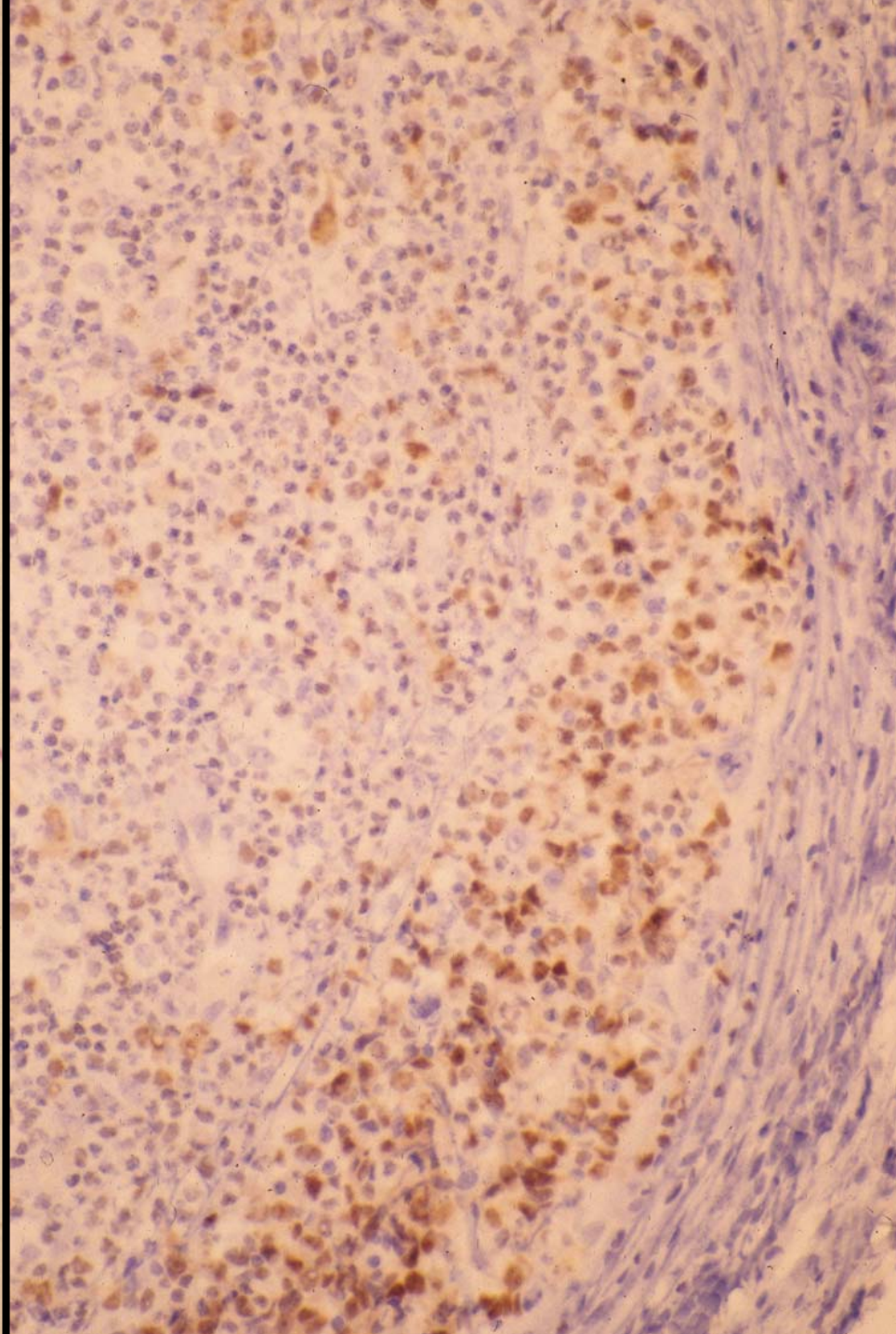
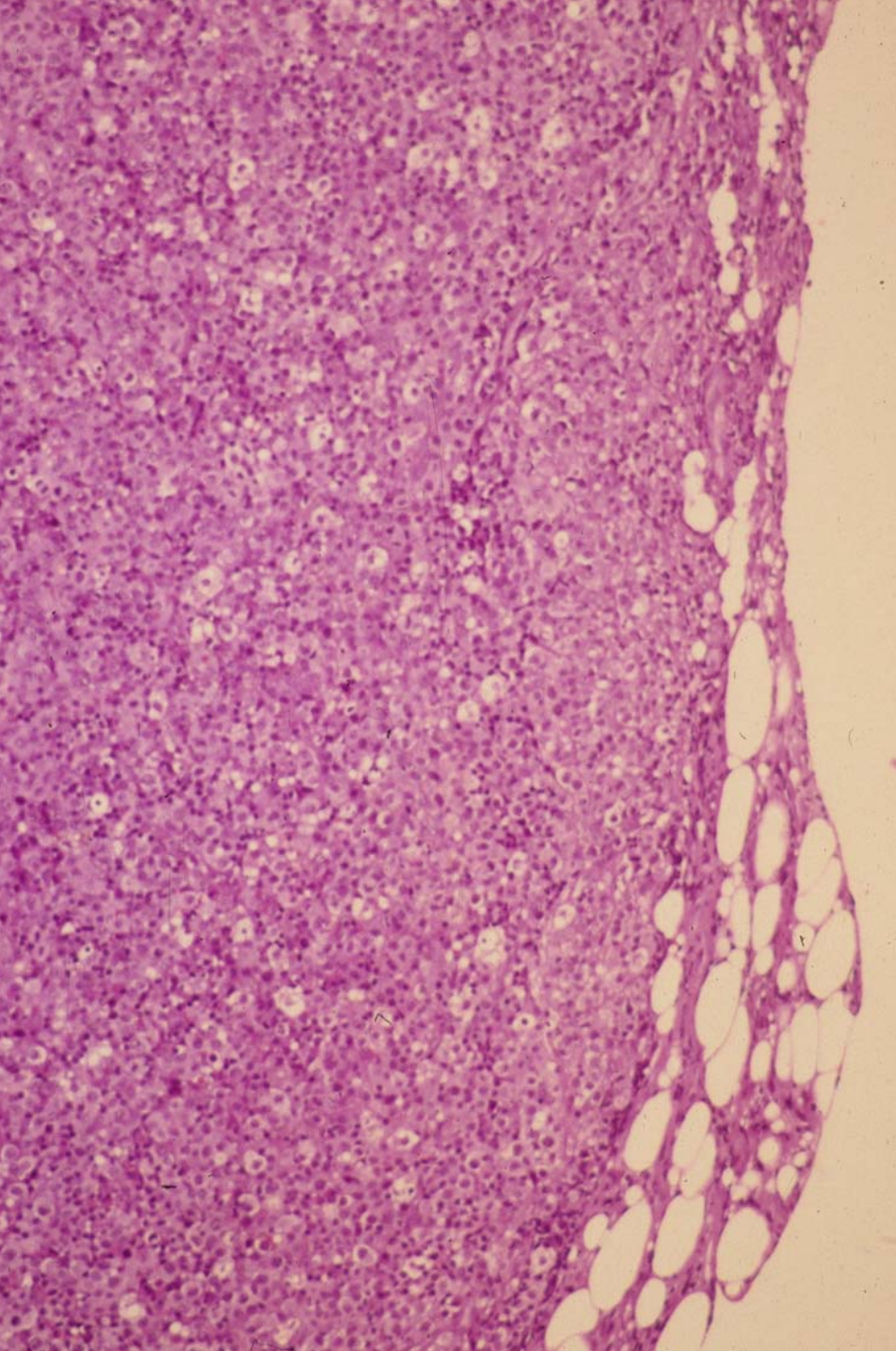
**INTERPRETATION: CD45 lymphoid process with partial myeloid antigen expression. CD7 on some cells may reflect a T-lineage associated phenotype.**

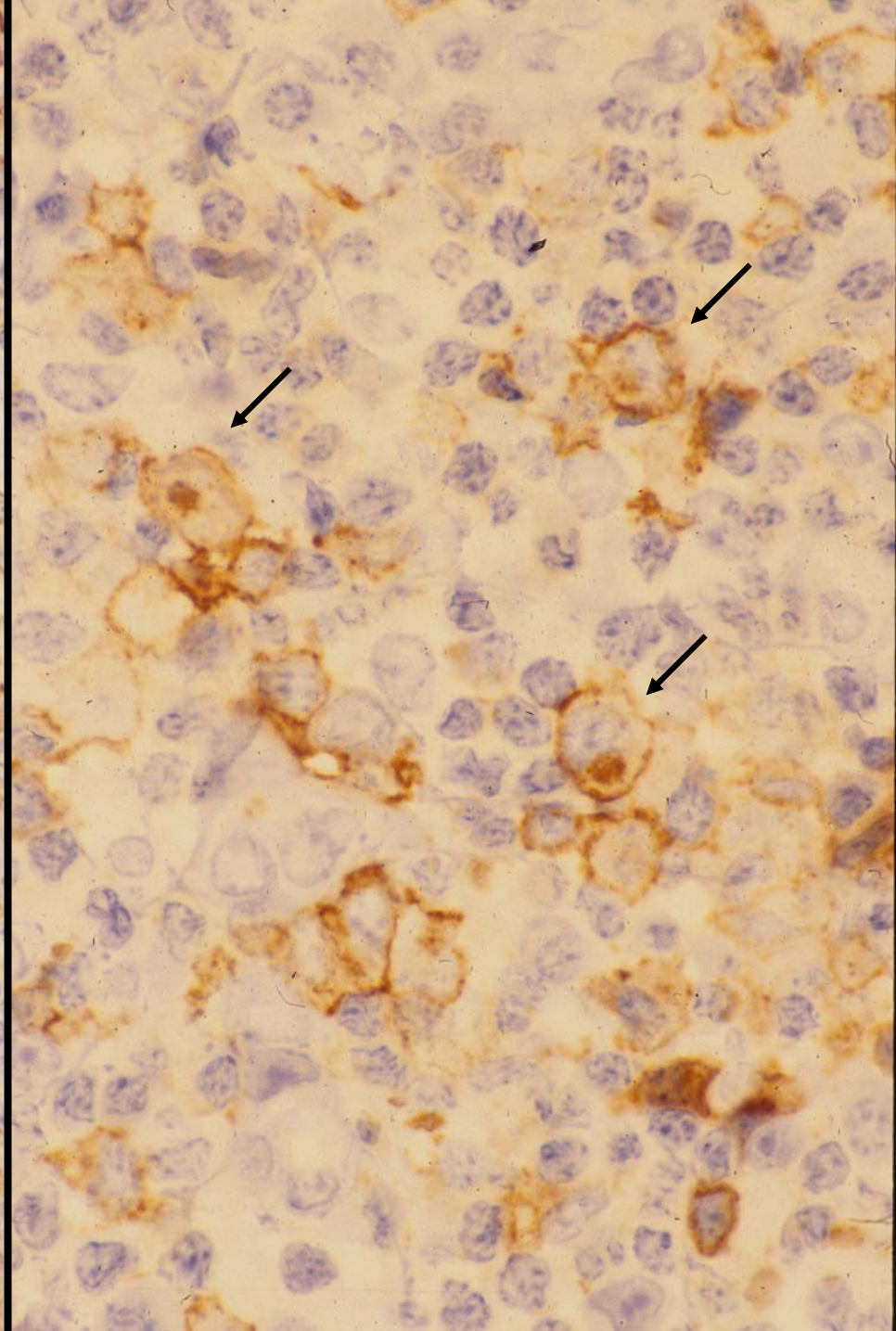
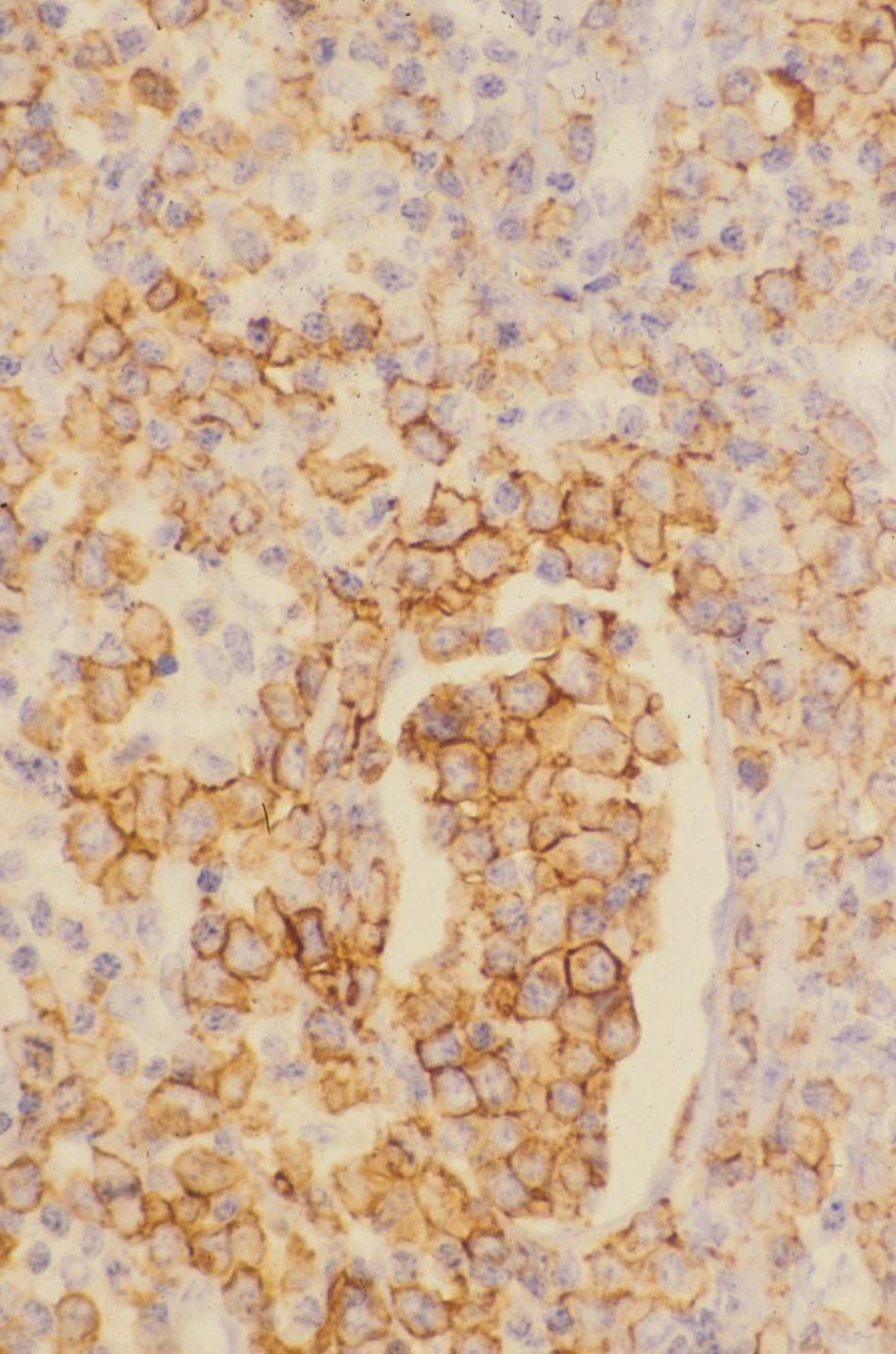
# Clinical Course, cont.

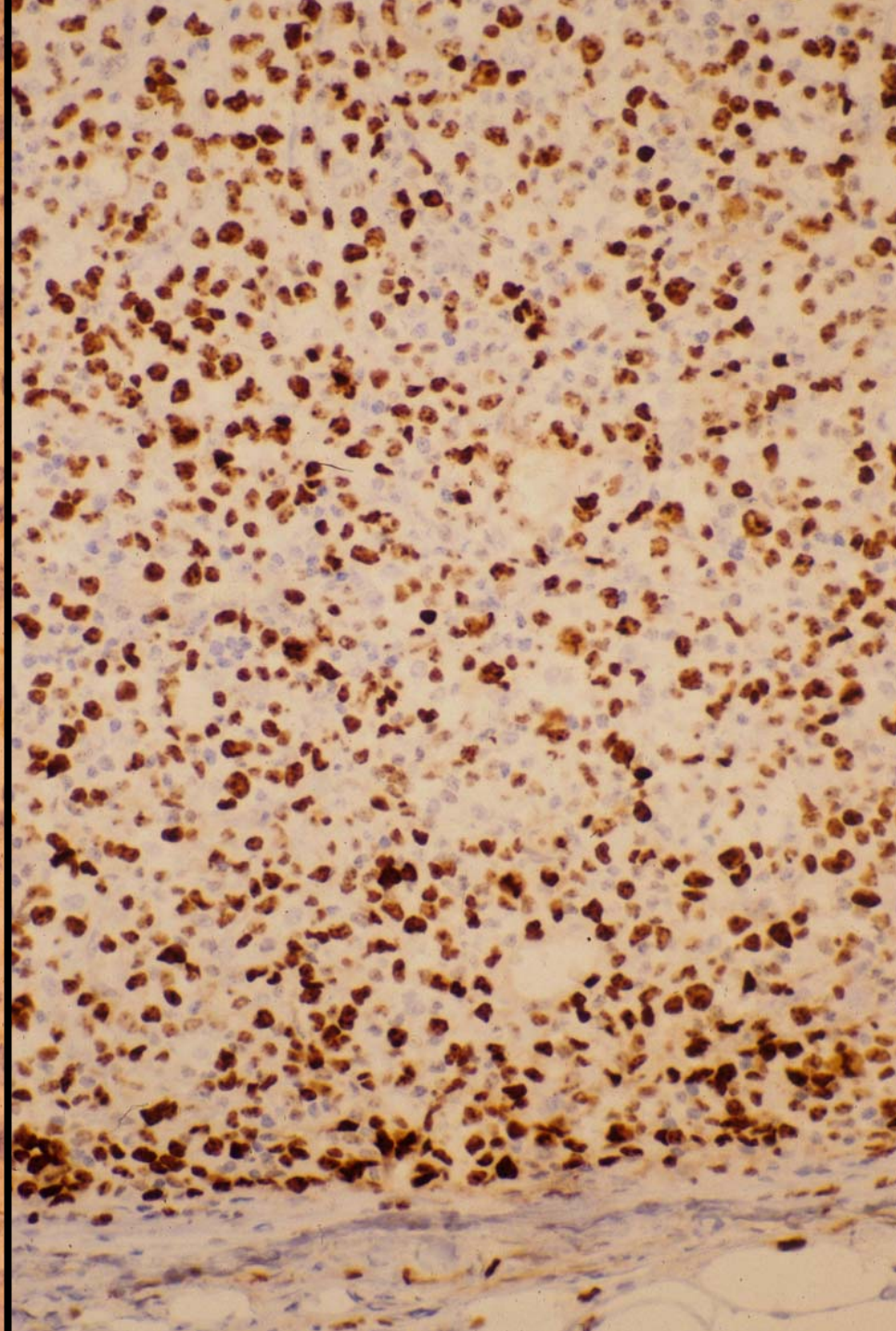
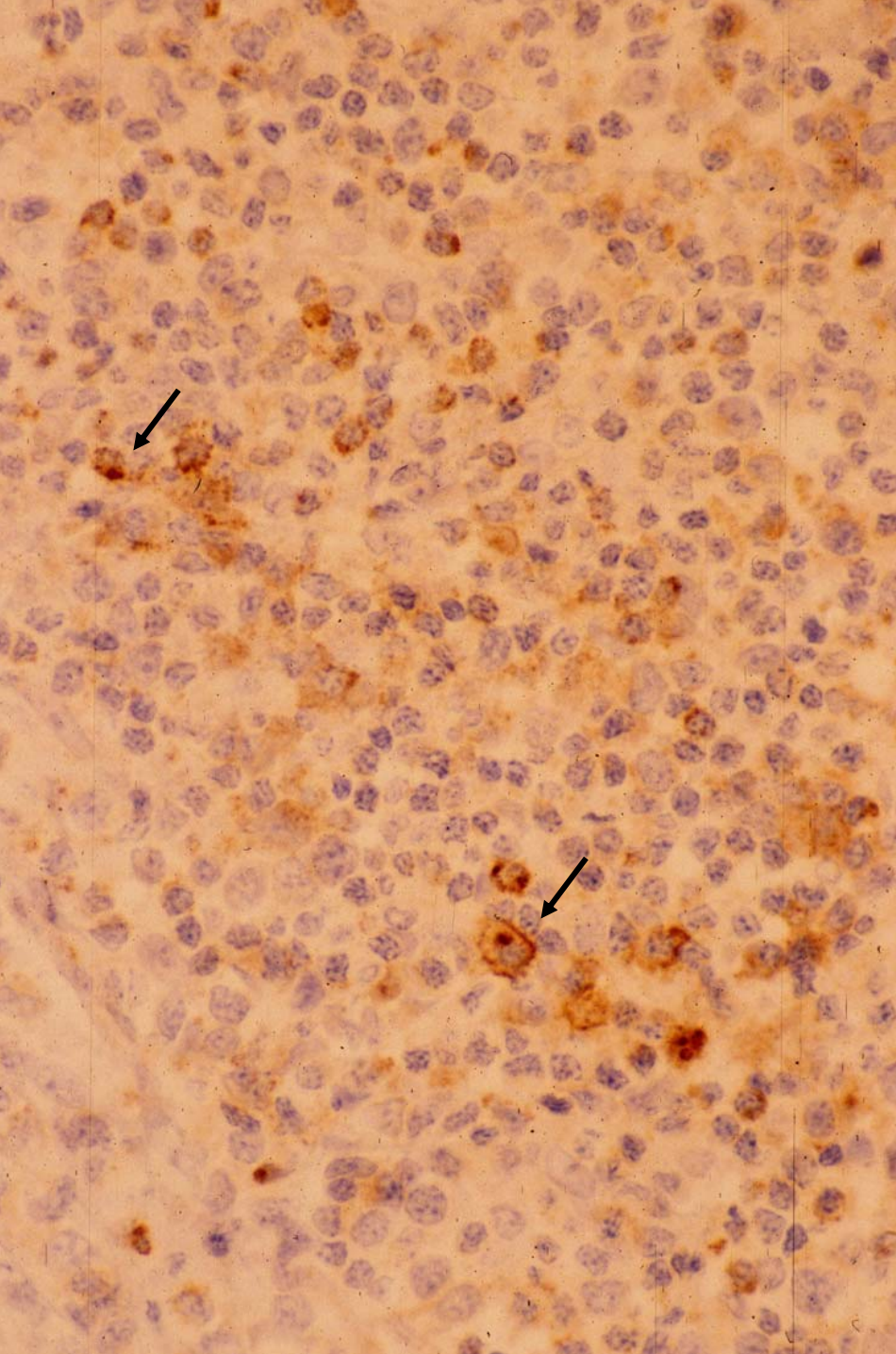
- **Day 2:** WBC doubled to  $81.7 \times 10^9$  L
- **Day 5:** WBC doubled to  $167 \times 10^9$  L
- **Day 7:** Worsening respiratory distress  
Patient intubated  
Transferred to children's hospital  
Started on ECMO

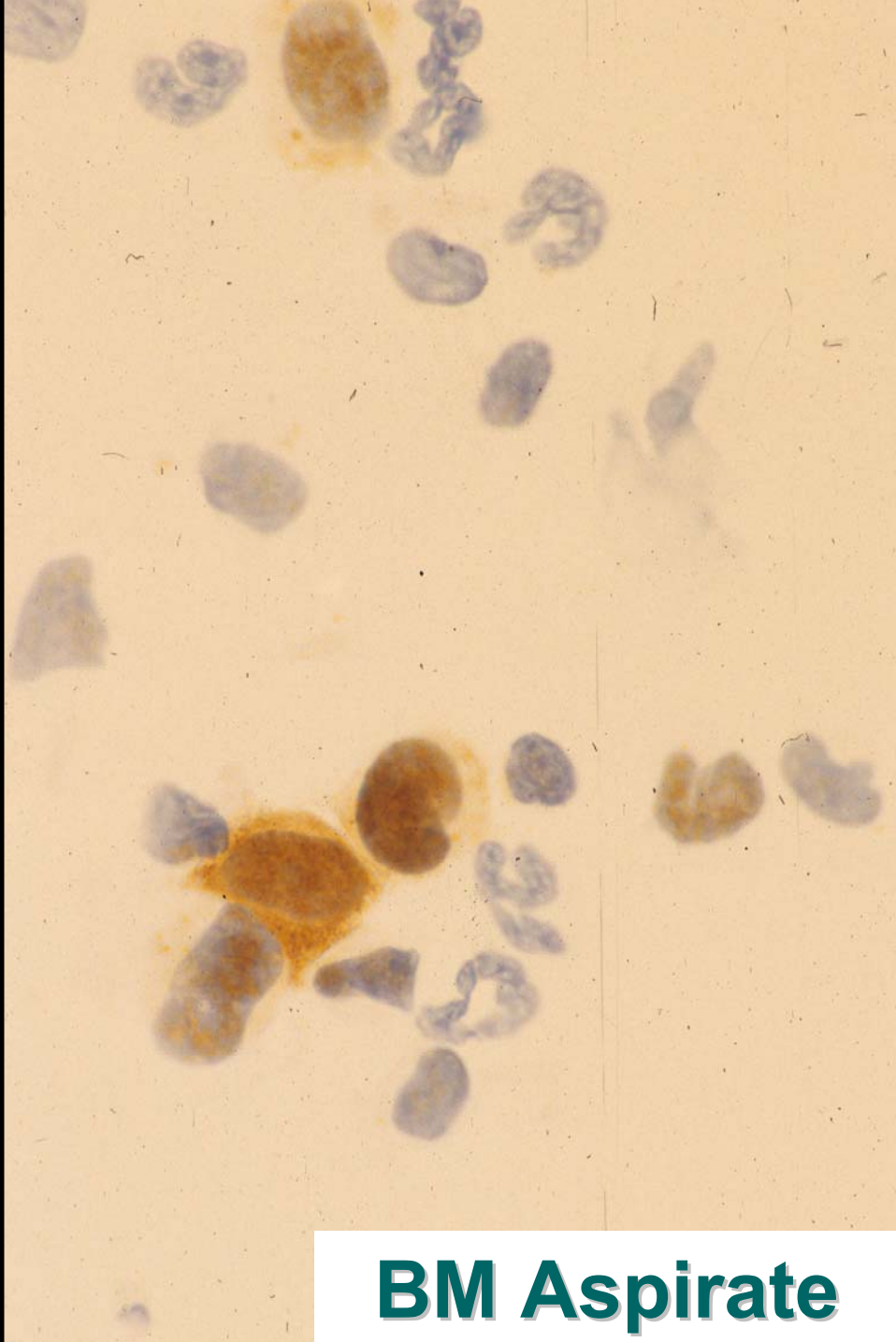
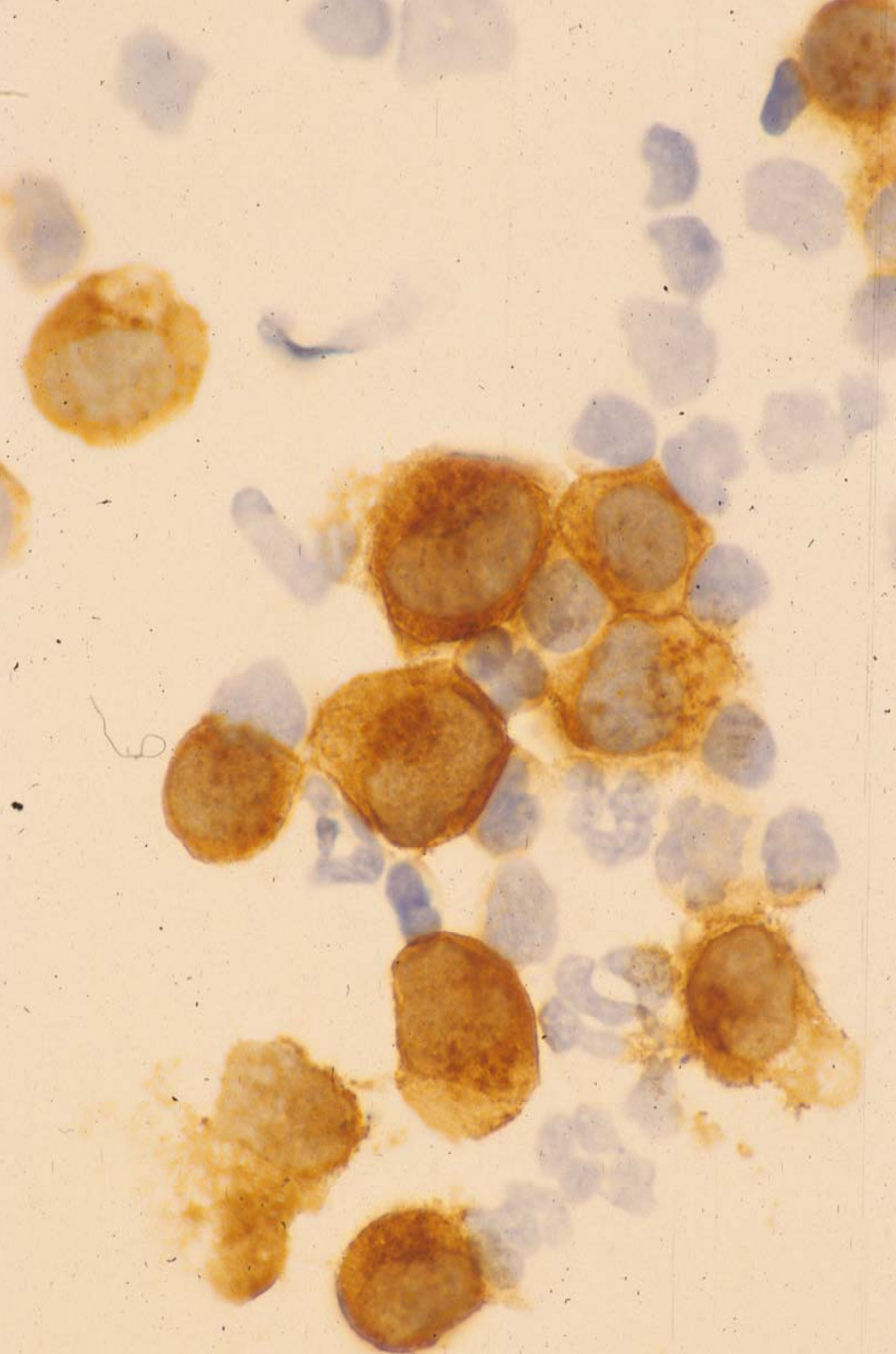












**BM Aspirate**

